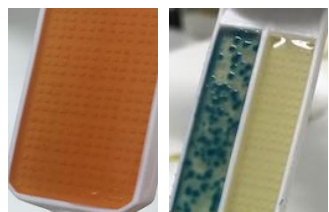


LACTOBAC INTERPRETAÇÃO DE RESULTADOS

▶ BACTÉRIAS GRAM NEGATIVAS



Escherichia coli



Klebsiella spp

▶ LEVEDURA / PROTOTHCECA

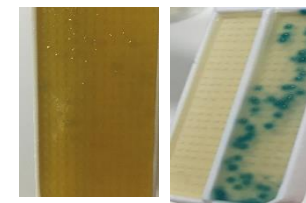


▶ BACTÉRIAS GRAM POSITIVAS

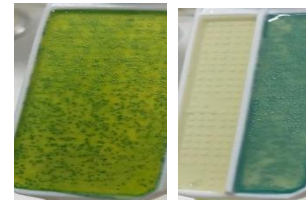
Streptococcus agalactiae *



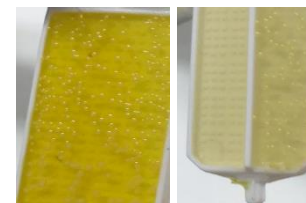
Streptococcus uberis /
Lactococcus *



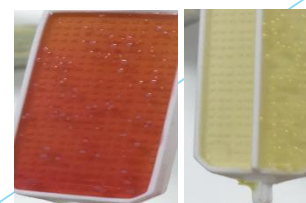
Enterococcus spp *



Staphylococcus aureus **



Staphylococcus coagulase
negativa



* Lactobac Diferencial ** Staphy Test